

MONTHLY PERFORMANCE REPORT

**MWRA EMPLOYEES' RETIREMENT
SYSTEM**

APRIL 30, 2021



GOALS & OBJECTIVES

Investment Return Objective

“Its primary goal is to provide promised benefits to participants and beneficiaries of the MWRA Employees’ Retirement system. Plan assets should be equal to or greater than the present value of the projected benefit obligations (“fully funded”). When Plan assets are less than the present value of projected benefit obligations, a schedule will be established and a plan will be in place to meet a fully funded status. When achieving return objectives required to fully fund the system, the Board is intent on controlling risk. Consistency of returns and risk of loss are primary considerations. The Board has also determined that the annual performance of plan assets should not vary substantially from returns achieved by other public pension funds with similar goals and objectives.”

Return Expectations

The investment growth should be maintained in such a manner that the minimum nominal rate of return does not cause a negative real rate of return over a full market cycle:

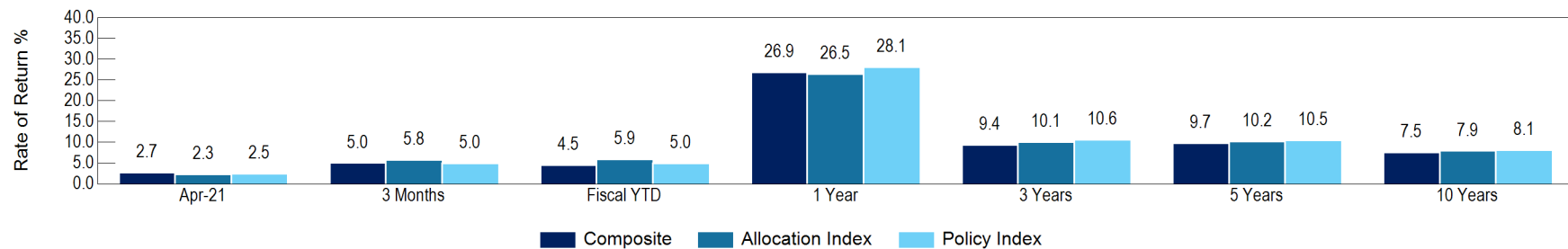
- **Time Horizon:** Return assumptions will be based on a ten year time horizon with a detailed review and analysis to be made at least annually to monitor allocations and assumptions. Should a manager deviate from proscribed mandate or expected risk and return profile by a consequential degree, that manager may be reevaluated at any time.
- **Liquidity Needs:** Presently contributions exceed plan withdrawals to provide benefits, payouts, and/or plan expenses. Portfolio liquidity will be managed based on the cash flow needs of the System.
- **Regulatory Considerations:** Assets of this Fund shall be invested in a manner consistent with the fiduciary standards established under Code of Massachusetts Regulations 840 (“840 CMR”). The Board shall also use as precedent the Employee Retirement Income Security Act (ERISA).



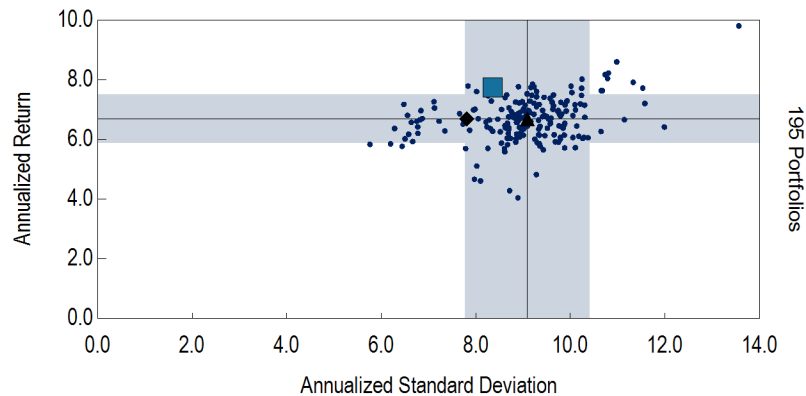
MWRA EMPLOYEES' RETIREMENT SYSTEM

EXECUTIVE SUMMARY

Net Return Summary Ending April 30, 2021



20 Years Ending March 31, 2021



Performance

- The Composite returned 2.7% (net) for the month outperforming the Allocation Index (2.3%) and the Policy Index (2.5%).
- Global equities pushed higher in April as a relatively positive macroeconomic backdrop bolstered market sentiment. In the U.S., the S&P 500 Index posted its third consecutive month of gains, adding 5.3% in April. Outside the U.S., local markets benefitted from broad dollar weakness: the MSCI ACWI ex-US and MSCI Emerging Markets indexes gained 2.9% and 2.5%, respectively. The portfolio's Domestic Equity composite returned 5.2% (net) and the Non-US Equity composite was up 3.7% (net) for the month.
- Within fixed income, yields fell following a significant rise in March. The 10- and 30-year Treasury yields fell 10 and 12 basis points, respectively. The Fixed Income composite returned 0.9% (net) for the month while the BC Agg and BC US HY returned 0.8% and 1.1%, respectively.
- This brings the total plan return for the trailing one year period to 26.9% (net), while the Allocation and Policy Index returned 26.5% (net) and 28.1% (net) respectively.

Statistics Summary

	Anlzd Ret	Anlzd Std Dev	Rank
Composite	7.5%	8.4%	13
Allocation Index	6.5%	7.8%	73
Policy Index	6.7%	8.5%	58
InvMetrics Public DB Gross Median	6.9%	9.3%	--

20 years Risk/Return is as of 03/31/2021. Chart reflects universe data on quarter end months only.

Returns for 20 years Risk/Return and Statistics Summary are gross of fees.

Since inception return is 8.7% gross of fees. Prior to 1999, performance history does not capture separate net and gross returns.



MWRA EMPLOYEES' RETIREMENT SYSTEM

TOTAL FUND PERFORMANCE DETAIL (NET)

	Market Value (\$)	% of Portfolio	Policy %	1 Mo (%)	Fiscal YTD (%)	1 Yr (%)	3 Yrs (%)	5 Yrs (%)	10 Yrs (%)	Inception (%)	Inception Date
Composite	671,134,489	100.0	100.0	2.7	4.5	26.9	9.4	9.7	7.5	7.1	Jan-86
<i>Allocation Index</i>				2.3	5.9	26.5	10.1	10.2	7.9	--	Jan-86
<i>Policy Index</i>				2.5	5.0	28.1	10.6	10.5	8.1	--	Jan-86
Total Balanced	4,900,203	0.7	0.0	2.7	7.1	32.7	7.0	7.6	4.6	5.2	Dec-10
PRIT Core Fund	4,900,203	0.7		2.7	7.1	27.8	10.6	10.9	8.5	7.3	Apr-99
<i>60% S&P 500 / 40% BBgBarc Aggregate</i>				3.5	5.9	25.8	13.6	11.8	10.0	6.7	Apr-99
Total Domestic Equity	209,935,252	31.3	31.0	5.2	11.9	49.6	19.1	17.6	13.4	8.3	May-99
<i>Russell 3000</i>				5.2	11.8	50.9	18.9	17.7	14.0	7.8	May-99
Large Cap	158,372,435	23.6	24.0	5.4	10.7	42.8	20.1	17.9	13.9	14.9	Dec-10
Rhumblin Advisors S&P 500 Index Fund	65,220,241	9.7	10.0	5.3	11.9	45.9	18.6	17.3	14.1	9.4	Apr-97
<i>S&P 500</i>				5.3	11.8	46.0	18.7	17.4	14.2	9.4	Apr-97
Coho Relative Value Equity	45,497,883	6.8	7.0	3.5	9.9	32.8	14.4	12.9	--	13.5	Mar-16
<i>Russell 1000 Value</i>				4.0	15.7	45.9	12.3	12.2	11.1	13.7	Mar-16
Polen Focused Growth	47,654,311	7.1	7.0	7.5	9.2	47.2	27.8	23.4	--	22.5	Feb-16
<i>Russell 1000 Growth</i>				6.8	7.8	51.4	25.4	22.9	17.0	23.0	Feb-16
Small Cap	51,562,817	7.7	7.0	4.6	15.8	74.8	16.9	17.4	12.5	14.2	Dec-10
Boston Partners Small Cap Value	26,113,735	3.9	3.5	4.5	23.7	82.3	12.1	12.9	10.2	11.1	Feb-97
<i>Russell 2000 Value</i>				2.0	23.6	79.0	11.7	13.5	10.1	9.7	Feb-97
Loomis Sayles Small Cap Growth	25,449,082	3.8	3.5	4.8	7.9	66.8	21.0	21.4	14.4	8.0	Jan-97
<i>Russell 2000 Growth</i>				2.2	7.2	69.2	18.0	18.9	12.9	8.3	Jan-97
Total Non-US Equity	137,527,937	20.5	19.0	3.7	4.2	45.3	7.4	10.7	4.6	5.2	Mar-99
International Equity	118,614,029	17.7	12.0	3.8	4.9	48.2	9.4	11.5	5.5	5.0	Sep-05
SEG Baxter Street	43,172,682	6.4	5.0	4.8	5.4	44.9	12.1	13.3	--	13.3	May-16
<i>MSCI ACWI ex USA</i>				2.9	6.5	43.0	7.0	9.8	4.7	9.8	May-16
Schroder International Alpha Trust Class 1	53,831,702	8.0	4.0	2.4	6.3	54.6	12.3	13.0	--	8.8	Mar-12
<i>MSCI ACWI ex USA</i>				2.9	6.5	43.0	7.0	9.8	4.7	6.4	Mar-12
Baillie Gifford International Growth Fund Class K	21,609,645	3.2	3.0	5.2	2.4	--	--	--	--	23.7	Oct-20
<i>MSCI ACWI ex USA</i>				2.9	6.5	43.0	7.0	9.8	4.7	24.7	Oct-20

Since inception return is 8.7% gross of fees. Prior to 1999, performance history does not capture separate net and gross returns.

In November 2019, Loomis Sayles and Schroders transitioned from a mutual fund to a CIT structure. Performance prior to transitioning to the CIT investment vehicle is linked to mutual fund performance history.



MWRA EMPLOYEES' RETIREMENT SYSTEM

TOTAL FUND PERFORMANCE DETAIL (NET)

	Market Value (\$)	% of Portfolio	Policy %	1 Mo (%)	Fiscal YTD (%)	1 Yr (%)	3 Yrs (%)	5 Yrs (%)	10 Yrs (%)	Inception (%)	Inception Date
Emerging Markets Equity	18,913,907	2.8	7.0	3.3	--	--	--	--	--	-0.1	Mar-21
<i>MSCI Emerging Markets</i>				2.5	4.8	48.7	7.5	12.5	3.6	0.9	Mar-21
Axiom Emerging Markets Trust Class 2	18,913,907	2.8	7.0	3.3	--	--	--	--	--	-0.1	Mar-21
<i>MSCI Emerging Markets</i>				2.5	4.8	48.7	7.5	12.5	3.6	0.9	Mar-21
Total Fixed Income	164,541,285	24.5	24.0	0.9	-1.4	5.7	5.8	4.8	4.7	6.5	Mar-99
Garcia Hamilton Fixed Income Aggregate	45,611,001	6.8	6.0	0.7	-2.7	0.8	4.6	--	--	4.3	Apr-18
<i>BBgBarc US Aggregate TR</i>				0.8	-2.6	-0.3	5.2	3.2	3.4	4.8	Apr-18
Lord Abbett Core Fixed Income	26,113,425	3.9	4.0	0.8	-1.9	2.6	5.5	--	--	5.1	Apr-18
<i>BBgBarc US Aggregate TR</i>				0.8	-2.6	-0.3	5.2	3.2	3.4	4.8	Apr-18
Rhumbline TIPS	31,832,533	4.7	4.0	1.4	-0.1	6.1	6.2	--	--	4.2	Jun-16
<i>BBgBarc US TIPS TR</i>				1.4	-0.1	6.1	6.2	4.1	3.3	4.3	Jun-16
Loomis Sayles Multisector Full Discretion Trust	49,003,646	7.3	8.0	1.0	-1.4	10.4	7.0	6.6	5.6	7.9	Mar-99
<i>BBgBarc US Aggregate TR</i>				0.8	-2.6	-0.3	5.2	3.2	3.4	4.8	Mar-99
<i>BBgBarc US High Yield TR</i>				1.1	1.9	19.7	7.0	7.5	6.4	6.9	Mar-99
Octagon Senior Secured Credit Cayman Fund Ltd. - Class L Acc, Series 1	11,925,841	1.8	2.0	0.5	1.9	13.9	--	--	--	4.5	Aug-19
<i>Credit Suisse Leveraged Loan</i>				0.5	2.5	16.4	4.1	5.0	4.4	4.1	Aug-19
Invesco Mortgage Recovery Loans Feeder Fund	54,839	0.0		0.0	0.0	-1.1	3.3	0.6	6.1	11.5	Apr-10
<i>BBgBarc US Aggregate TR</i>				0.8	-2.6	-0.3	5.2	3.2	3.4	3.6	Apr-10
Total Hedge Fund	39,792,147	5.9	6.0	1.5	4.0	19.4	5.7	5.4	3.9	3.7	Oct-06
PRIM Portfolio Completion Strategies	14,974,852	2.2		1.6	6.8	19.5	4.6	5.7	4.5	4.1	Oct-06
Corbin Pinehurst Partners	12,440,118	1.9		1.7	3.9	28.1	--	--	--	9.9	Nov-18
<i>HFRI Fund of Funds Composite Index</i>				2.4	4.3	22.6	6.2	6.0	3.5	8.5	Nov-18
UBS Neutral Alpha Strategies	11,628,989	1.7		1.1	1.0	12.6	--	--	--	6.7	Nov-18
<i>HFRI Fund of Funds Composite Index</i>				2.4	4.3	22.6	6.2	6.0	3.5	8.5	Nov-18
Entrust Peru Wind Down	748,188	0.1		-0.1	-0.8	0.1	-4.0	--	--	-3.9	Dec-17
<i>HFRI Fund of Funds Composite Index</i>				2.4	4.3	22.6	6.2	6.0	3.5	5.8	Dec-17
Other	5,049,420	0.8	0.0	0.0	0.0	0.1	1.5	1.3	0.7	0.7	Dec-10
Cash Account	5,049,420	0.8		0.0	0.0	0.1	1.5	1.3	0.7	1.8	Feb-00
<i>91 Day T-Bills</i>				0.0	0.0	0.1	1.3	1.1	0.6	1.5	Feb-00

Importantly, all returns in this report, including those of the private real estate managers, are based on a time weighted return calculation and not based on IRRs, which can result in return differences. Corbin Pinehurst Partners, Entrust Peru Wind Down, and UBS Neutral Alpha Strategies are preliminary as of 04/30/2021 and are subject to change when finalized.



MWRA EMPLOYEES' RETIREMENT SYSTEM

TOTAL FUND PERFORMANCE DETAIL (NET)

	Market Value (\$)	% of Portfolio	Policy %	1 Mo (%)	Fiscal YTD (%)	1 Yr (%)	3 Yrs (%)	5 Yrs (%)	10 Yrs (%)	Inception (%)	Inception Date
Total Real Estate	50,233,839	7.5	10.0	0.0	1.8	3.2	5.9	7.1	10.0	7.6	Apr-99
<i>NCREIF Property Index</i>				0.0	1.7	2.6	4.9	5.8	8.8	8.4	Apr-99
Morgan Stanley Prime Property (\$2.8m commitment in '95)	20,532,911	3.1		0.0	1.9	2.6	5.0	6.6	10.4	8.4	Sep-95
TA Realty Core Property Fund, LP (\$15m commitment in '19)	20,842,742	3.1		0.0	2.3	6.3	--	--	--	6.4	Jun-19
Invesco Mortgage Recovery II (\$3M commitment in '15)	705,912	0.1		0.0	0.0	-51.5	-12.0	-3.2	--	-3.1	Oct-15
Landmark VI (\$2m commitment in '11)	91,255	0.0		0.0	0.0	-11.2	-11.4	-7.1	--	3.4	Jul-11
Landmark VIII (\$4m commitment in '17)	1,391,681	0.2		0.0	0.0	-2.9	3.4	--	--	12.1	Nov-17
Courtland/Mesirov MFire (\$2m commitment in '11)	628,063	0.1		0.0	0.0	-1.6	-1.9	1.7	--	2.3	May-12
Cerberus Institutional Real Estate Partners III (\$1.5m commitment in '12)	519,641	0.1		0.0	2.1	12.7	10.3	8.2	--	12.3	May-13
TA Realty Fund X LP (\$3.5m commitment in '12)	380,494	0.1		0.0	3.2	0.5	7.3	7.5	--	8.9	May-13
TerraCap Partners III, LP (\$2.6m commitment in '15)	1,589,658	0.2		0.0	0.0	3.8	4.4	10.2	--	10.2	Jul-15
TerraCap Partners IV, LP (\$4m commitment in '17)	3,513,652	0.5		0.0	0.0	6.0	9.1	--	--	9.0	Nov-17
Cerberus Institutional Real Estate Partners III AIV, S.C.A. SICAV-RAIF	37,830	0.0		0.0	--	--	--	--	--	-2.1	Mar-21
Total Private Equity	59,154,409	8.8	10.0	0.4	3.0	22.8	9.4	10.2	10.8	9.3	Apr-99
<i>CJA US All PE</i>				0.0	0.0	36.7	14.7	15.5	13.4	12.7	Apr-99
<i>NASDAQ W/O Income</i>				5.4	8.3	57.1	25.5	23.9	17.1	8.2	Apr-99
PRIM Vintage Year 2008 (\$3m commitment in '08)	1,026,236	0.2		0.1	5.1	11.1	11.8	16.6	17.7	8.8	Jun-08
PRIM Vintage Year 2009 (\$1m commitment in '09)	166,956	0.0		0.0	20.9	88.2	42.8	30.7	23.9	13.8	Nov-09
PRIM Vintage Year 2010 (\$1m commitment in '10)	583,465	0.1		0.1	16.1	54.4	22.6	20.8	16.2	11.2	Jun-10
PRIM Vintage Year 2011 (\$1.5m commitment in '11)	1,268,709	0.2		23.2	40.3	52.0	26.4	24.3	7.9	7.9	May-11
PRIM Vintage Year 2012 (\$1m commitment in '12)	785,675	0.1		0.9	16.0	46.2	25.0	22.7	--	-10.1	Jun-12
PRIM Vintage Year 2014 (\$2m commitment in '14)	2,083,902	0.3		-0.1	12.6	29.1	24.9	22.5	--	5.6	Jun-14
PRIM Vintage Year 2017 (\$2m commitment in '17)	1,748,808	0.3		0.6	18.9	36.0	15.8	--	--	14.1	May-17
PRIM Vintage Year 2020 (\$5m commitment in '20)	517,105	0.1		0.3	7.9	17.1	--	--	--	15.1	Mar-20
PRIM Vintage Year 2021 (\$5m commitment in '21)	82,875	0.0		-0.4	-0.4	--	--	--	--	-0.4	Dec-20
Alcentra European DLF (\$5m commitment in '14)	921,311	0.1		0.0	0.0	4.4	-1.0	2.6	--	4.0	Jan-15
Ascent Fund IV (\$2m commitment in '04)	7,413	0.0		0.0	0.0	-2.6	-40.7	-43.8	-32.4	-21.1	Jul-04
Ascent Fund IV-B (\$1m commitment in '16)	136,669	0.0		0.0	0.0	-11.0	-22.5	--	--	-14.1	Jul-16
Ascent Fund V (\$2m commitment in '08)	1,676,889	0.2		0.0	0.0	3.8	-4.3	-0.6	5.9	4.2	Oct-08
Ascent VI (\$3m commitment in '15)	2,978,796	0.4		0.0	0.0	0.4	0.6	3.4	--	0.3	Dec-15

Importantly, all returns in this report, including those of the private markets managers, are based on a time weighted return calculation and not based on IRRs, which can result in return differences.



MWRA EMPLOYEES' RETIREMENT SYSTEM

TOTAL FUND PERFORMANCE DETAIL (NET)

	Market Value (\$)	% of Portfolio	Policy %	1 Mo (%)	Fiscal YTD (%)	1 Yr (%)	3 Yrs (%)	5 Yrs (%)	10 Yrs (%)	Inception (%)	Inception Date
CVI Credit Value Fund IV A LP (\$6m commitment in '17)	6,266,410	0.9		0.0	-0.8	19.1	3.9	--	--	3.4	Dec-17
Invesco Fund IV (\$3m commitment in '03)	1,381	0.0		0.0	0.0	-12.2	-20.9	-9.8	0.4	--	Feb-04
Invesco Fund VI (\$5m commitment in '13)	6,745,417	1.0		0.0	0.0	28.7	12.0	13.4	--	13.8	Jul-13
Kayne Energy Fund VII (\$5m commitment in '15)	1,648,825	0.2		0.0	32.8	2.9	-37.8	-15.3	--	-14.6	Jan-16
Foundry 2007 (\$3m commitment in '07)	467,702	0.1		0.0	45.7	106.9	-0.4	-0.8	8.6	21.7	Dec-07
Foundry 2010 (\$3m commitment in '10)	3,950,914	0.6		0.0	0.0	30.2	12.5	9.9	10.6	9.8	Jan-11
Foundry 2010 Annex (\$0.4m commitment in '15)	456,587	0.1		0.0	0.0	129.4	57.4	36.2	--	29.8	Sep-15
Pinebridge PEP V (\$6m commitment in '07)	707,831	0.1		0.0	0.0	27.6	0.2	1.2	7.3	--	Mar-08
Landmark XV (\$3m commitment in '13)	1,207,397	0.2		0.0	0.0	0.1	5.1	9.1	--	11.2	Nov-13
JFL Equity Investors IV, L.P. (\$6m commitment in '16)	6,527,067	1.0		0.0	0.0	36.4	46.8	--	--	35.7	Jan-17
Private Advisors Small Co. Coinvestment Fund, LP (\$4m commitment in '17)	4,254,494	0.6		0.0	0.0	20.2	20.5	--	--	17.0	Feb-17
Park Square Credit Opportunities III (\$3m commitment in '17)	2,621,126	0.4		0.0	0.0	6.1	8.6	--	--	6.2	Feb-18
Ironsides Constitution Opportunities (\$3m commitment in '18)	2,420,397	0.4		0.0	0.0	13.3	--	--	--	8.9	Sep-18
HarbourVest Dover Street X (\$9m commitment in '20)	2,848,563	0.4		0.0	0.0	--	--	--	--	100.9	Jun-20
Hamilton Lane Secondary Fund V LP (\$9m commitment in '20)	2,809,105	0.4		0.0	0.0	--	--	--	--	29.0	Jul-20
JFL Equity Investors V, L.P. (\$8m commitment in '20)	2,236,384	0.3		0.0	0.0	--	--	--	--	-10.3	Sep-20
<i>Private Equity Benchmark (1 Qtr. Lag)</i>				0.0	13.2	22.9	15.7	15.5	13.7	36.7	Sep-20

Importantly, all returns in this report, including those of the private markets managers, are based on a time weighted return calculation and not based on IRRs, which can result in return differences.



MWRA EMPLOYEES' RETIREMENT SYSTEM

ESTIMATED FEE SCHEDULE

Account	Fee Schedule	Market Value As of 4/30/2021	% of Portfolio	Estimated Annual Fee (\$)	Estimated Annual Fee (%)
PRIT Core Fund	0.49% of Assets	\$4,900,203	0.7%	\$24,011	0.49%
Rhumbline Advisors S&P 500 Index Fund	0.05% of Assets	\$65,220,241	9.7%	\$32,610	0.05%
Coho Relative Value Equity	0.50% of First 75.0 Mil, 0.40% of Next 75.0 Mil, 0.35% Thereafter	\$45,497,883	6.8%	\$227,489	0.50%
Polen Focused Growth	0.65% of Assets	\$47,654,311	7.1%	\$309,753	0.65%
Boston Partners Small Cap Value	1.00% of Assets	\$26,113,735	3.9%	\$261,137	1.00%
Loomis Sayles Small Cap Growth	0.45% of Assets	\$25,449,082	3.8%	\$114,521	0.45%
SEG Baxter Street	1.00% of Assets	\$43,172,682	6.4%	\$431,727	1.00%
Schroder International Alpha Trust Class 1	0.55% of Assets	\$53,831,702	8.0%	\$296,074	0.55%
Baillie Gifford International Growth Fund Class K	0.60% of Assets	\$21,609,645	3.2%	\$129,658	0.60%
Axiom Emerging Markets Trust Class 2	0.73% of Assets	\$18,913,907	2.8%	\$138,072	0.73%
Garcia Hamilton Fixed Income Aggregate	0.25% of First 25.0 Mil, 0.20% Thereafter	\$45,611,001	6.8%	\$103,722	0.23%
Lord Abbett Core Fixed Income	0.19% of Assets	\$26,113,425	3.9%	\$49,616	0.19%
Rhumbline TIPS	0.05% of First 50.0 Mil, 0.04% Thereafter	\$31,832,533	4.7%	\$15,916	0.05%
Loomis Sayles Multisector Full Discretion Trust	0.50% of First 20.0 Mil, 0.40% of Next 20.0 Mil, 0.30% Thereafter	\$49,003,646	7.3%	\$207,011	0.42%
Octagon Senior Secured Credit Cayman Fund Ltd. - Class L Acc, Series 1	0.40% of Assets	\$11,925,841	1.8%	\$47,703	0.40%
Invesco Mortgage Recovery Loans Feeder Fund	No Fee	\$54,839	0.0%	--	--
PRIM Portfolio Completion Strategies	No Fee	\$14,974,852	2.2%	--	--
Corbin Pinehurst Partners	0.85% of Assets	\$12,440,118	1.9%	\$105,741	0.85%
UBS Neutral Alpha Strategies	0.90% of Assets	\$11,628,989	1.7%	\$104,661	0.90%
Entrust Peru Wind Down	0.50% of Assets	\$748,188	0.1%	\$3,741	0.50%
Cash Account	No Fee	\$5,049,420	0.8%	--	--
Morgan Stanley Prime Property (\$2.8m commitment in '95)	No Fee	\$20,532,911	3.1%	--	--
TA Realty Core Property Fund, LP (\$15m commitment in '19)	No Fee	\$20,842,742	3.1%	--	--
Invesco Mortgage Recovery II (\$3M commitment in '15)	No Fee	\$705,912	0.1%	--	--
Landmark VI (\$2m commitment in '11)	No Fee	\$91,255	0.0%	--	--



MWRA EMPLOYEES' RETIREMENT SYSTEM

ESTIMATED FEE SCHEDULE

Account	Fee Schedule	Market Value As of 4/30/2021	% of Portfolio	Estimated Annual Fee (\$)	Estimated Annual Fee (%)
Landmark VIII (\$4m commitment in '17)	No Fee	\$1,391,681	0.2%	--	--
Courtland/Mesirow MFire (\$2m commitment in '11)	No Fee	\$628,063	0.1%	--	--
Cerberus Institutional Real Estate Partners III (\$1.5m commitment in '12)	No Fee	\$519,641	0.1%	--	--
TA Realty Fund X LP (\$3.5m commitment in '12)	No Fee	\$380,494	0.1%	--	--
TerraCap Partners III, LP (\$2.6m commitment in '15)	No Fee	\$1,589,658	0.2%	--	--
TerraCap Partners IV, LP (\$4m commitment in '17)	No Fee	\$3,513,652	0.5%	--	--
Cerberus Institutional Real Estate Partners III AIV, S.C.A. SICAV-RAIF	No Fee	\$37,830	0.0%	--	--
PRIM Vintage Year 2008 (\$3m commitment in '08)	No Fee	\$1,026,236	0.2%	--	--
PRIM Vintage Year 2009 (\$1m commitment in '09)	No Fee	\$166,956	0.0%	--	--
PRIM Vintage Year 2010 (\$1m commitment in '10)	No Fee	\$583,465	0.1%	--	--
PRIM Vintage Year 2011 (\$1.5m commitment in '11)	No Fee	\$1,268,709	0.2%	--	--
PRIM Vintage Year 2012 (\$1m commitment in '12)	No Fee	\$785,675	0.1%	--	--
PRIM Vintage Year 2014 (\$2m commitment in '14)	No Fee	\$2,083,902	0.3%	--	--
PRIM Vintage Year 2017 (\$2m commitment in '17)	No Fee	\$1,748,808	0.3%	--	--
PRIM Vintage Year 2020 (\$5m commitment in '20)	No Fee	\$517,105	0.1%	--	--
PRIM Vintage Year 2021 (\$5m commitment in '21)	No Fee	\$82,875	0.0%	--	--
Alcentra European DLF (\$5m commitment in '14)	No Fee	\$921,311	0.1%	--	--
Ascent Fund IV (\$2m commitment in '04)	No Fee	\$7,413	0.0%	--	--
Ascent Fund IV-B (\$1m commitment in '16)	No Fee	\$136,669	0.0%	--	--
Ascent Fund V (\$2m commitment in '08)	No Fee	\$1,676,889	0.2%	--	--
Ascent VI (\$3m commitment in '15)	No Fee	\$2,978,796	0.4%	--	--
CVI Credit Value Fund IV A LP (\$6m commitment in '17)	No Fee	\$6,266,410	0.9%	--	--
Invesco Partnership Fund IV (\$3m commitment in '03)	No Fee	\$1,381	0.0%	--	--
Invesco Fund VI (\$5m commitment in '13)	No Fee	\$6,745,417	1.0%	--	--
Kayne Energy Fund VII (\$5m commitment in '15)	No Fee	\$1,648,825	0.2%	--	--
Foundry 2007 (\$3m commitment in '07)	No Fee	\$467,702	0.1%	--	--
Foundry 2010 (\$3m commitment in '10)	No Fee	\$3,950,914	0.6%	--	--
Foundry 2010 Annex (\$0.4m commitment in '15)	No Fee	\$456,587	0.1%	--	--
Pinebridge (AIG) PEP V Asia (\$6m commitment in '07)	No Fee	\$59,005	0.0%	--	--
Pinebridge (AIG) PEP V Co-Investment (\$6m commitment in '07)	No Fee	\$25,301	0.0%	--	--



MWRA EMPLOYEES' RETIREMENT SYSTEM

ESTIMATED FEE SCHEDULE

Account	Fee Schedule	Market Value As of 4/30/2021	% of Portfolio	Estimated Annual Fee (\$)	Estimated Annual Fee (%)
Pinebridge (AIG) PEP V Europe (\$6m commitment in '07)	No Fee	\$28,826	0.0%	--	--
Pinebridge (AIG) PEP V Large Market US Buyout (\$6m commitment in '07)	No Fee	\$127,137	0.0%	--	--
Pinebridge (AIG) PEP V Preferred Participation Fund (\$6m commitment in '07)	No Fee	\$239,501	0.0%	--	--
Pinebridge (AIG) PEP V Secondary (\$6m commitment in '07)	No Fee	\$34,233	0.0%	--	--
Pinebridge (AIG) PEP V Small-Mid Market US Buyout (\$6m commitment in '07)	No Fee	\$96,198	0.0%	--	--
Pinebridge (AIG) PEP V US Venture (\$6m commitment in '07)	No Fee	\$97,630	0.0%	--	--
Landmark XV (\$3m commitment in '13)	No Fee	\$1,207,397	0.2%	--	--
JFL Equity Investors IV, L.P. (\$6m commitment in '16)	No Fee	\$6,527,067	1.0%	--	--
Private Advisors Small Co. Coinvestment Fund, LP (\$4m commitment in '17)	No Fee	\$4,254,494	0.6%	--	--
Park Square Credit Opportunities III (\$3m commitment in '17)	No Fee	\$2,621,126	0.4%	--	--
Ironsides Constitution Opportunities (\$3m commitment in '18)	No Fee	\$2,420,397	0.4%	--	--
HarbourVest Dover Street X (\$9m commitment in '20)	No Fee	\$2,848,563	0.4%	--	--
Hamilton Lane Secondary Fund V LP (\$9m commitment in '20)	No Fee	\$2,809,105	0.4%	--	--
JFL Equity Investors V, L.P. (\$8m commitment in '20)	No Fee	\$2,236,384	0.3%	--	--
Investment Management Fee		\$671,134,489	100.0%	\$2,603,163	0.39%

Note:

Estimate fee for privates are ~\$1,301,900 annually, which brings the total expense ratio for privates to ~20 bps. This brings the total estimated expense ratio for MWRA to ~57 bps.



MWRA EMPLOYEES' RETIREMENT SYSTEM

NOTES

- 1 - Results for periods longer than one year are annualized.
- 2 - Total Balances, Large Cap, Small Cap, and Other Composite performance starts 12/1/2010.
- 3 - Preliminary Total Composite net of fee since inception return is 7.1% for the current month.
- 4 - Preliminary Total Composite gross of fee since inception return is 8.7% for the current month.
- 5 - Targets, Allocation Index, and Policy Index have been updated to reflect new allocation of 06/01/2020.
- 6 - Policy Index changed from Nasdaq to Cambridge All PE to reflect as of 5/1/2012.
- 7 - Policy Index Consists of: 24% S&P 500, 7% Russell 2000, 12% MSCI ACWI IMI , 7% MSCI Emerging Markets, 10% BBgBarc US Aggregate TR, 4% BBgBarc US TIPS TR, 10% BBgBarc US Universal TR, 10% NCREIF Property Index, 10% C|A US All PE , 6% HFRI Fund of Funds Composite Index.
- 8 - Allocation index consists of: Weighted index of underlying managers to their respective benchmark.



NEPC DISCLOSURES

Past performance is no guarantee of future results.

All investments carry some level of risk. Diversification and other asset allocation techniques do not ensure profit or protect against losses.

Some of the information presented herein has been obtained from external sources NEPC believes to be reliable. While NEPC has exercised reasonable professional care in preparing this content, we cannot guarantee the accuracy of all source information contained within.

The opinions presented herein represent the good faith views of NEPC as of the publication date and are subject to change at any time.

This presentation contains summary information regarding the investment management approaches described herein but is not a complete description of the investment objectives, portfolio management and research that supports these approaches. This analysis does not constitute a recommendation to implement any of the aforementioned approaches.



