

# PERFORMANCE REPORT

## MWRA EMPLOYEES' RETIREMENT SYSTEM

December, 2020

Sebastian Grzejka, CAIA, Senior Consultant

Lebo McCallum, Analyst



BOSTON | ATLANTA | CHARLOTTE | CHICAGO | DETROIT | LAS VEGAS | PORTLAND | SAN FRANCISCO

# GOALS & OBJECTIVES

## Investment Return Objective

**“Its primary goal is to provide promised benefits to participants and beneficiaries of the MWRA Employees’ Retirement system. Plan assets should be equal to or greater than the present value of the projected benefit obligations (“fully funded”). When Plan assets are less than the present value of projected benefit obligations, a schedule will be established and a plan will be in place to meet a fully funded status. When achieving return objectives required to fully fund the system, the Board is intent on controlling risk. Consistency of returns and risk of loss are primary considerations. The Board has also determined that the annual performance of plan assets should not vary substantially from returns achieved by other public pension funds with similar goals and objectives.”**

## Return Expectations

**The investment growth should be maintained in such a manner that the minimum nominal rate of return does not cause a negative real rate of return over a full market cycle:**

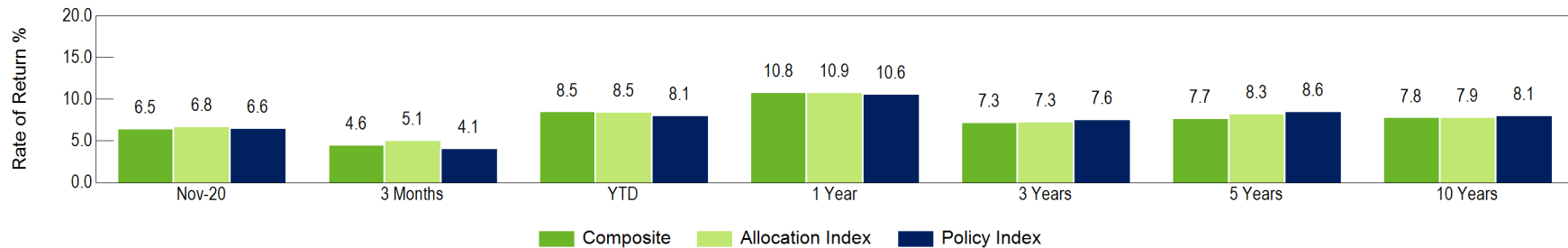
- **Time Horizon:** Return assumptions will be based on a ten year time horizon with a detailed review and analysis to be made at least annually to monitor allocations and assumptions. Should a manager deviate from proscribed mandate or expected risk and return profile by a consequential degree, that manager may be reevaluated at any time.
- **Liquidity Needs:** Presently contributions exceed plan withdrawals to provide benefits, payouts, and/or plan expenses. Portfolio liquidity will be managed based on the cash flow needs of the System.
- **Regulatory Considerations:** Assets of this Fund shall be invested in a manner consistent with the fiduciary standards established under Code of Massachusetts Regulations 840 (“840 CMR”). The Board shall also use as precedent the Employee Retirement Income Security Act (ERISA).



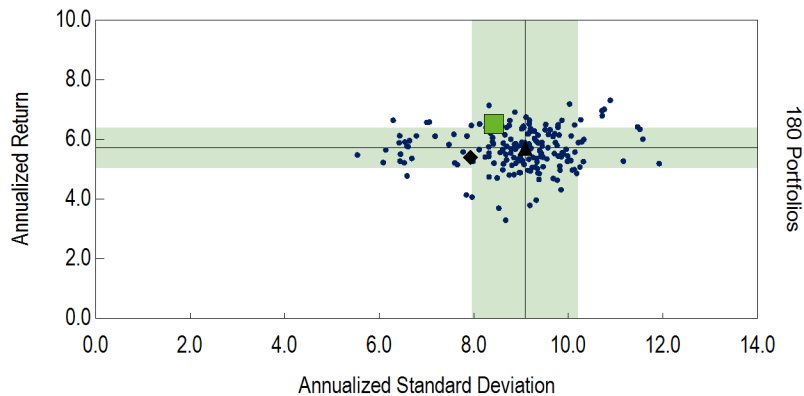
# MWRA Employees' Retirement System

## EXECUTIVE SUMMARY

### Net Return Summary Ending November 30, 2020



### 20 Years Ending September 30, 2020



### Statistics Summary

	Anlzd Ret	Anlzd Std Dev	Rank
Composite	6.5%	8.4%	15
Allocation Index	5.4%	7.9%	78
Policy Index	5.8%	8.5%	52
InvMetrics Public DB Gross Median	5.9%	9.1%	--

### Performance

- The Composite returned 6.5% (net) for the month underperforming the Allocation Index (6.8%) and underperforming the Policy Index (6.6%) over the same period respectively.
- Developed market equities rallied in November, driven by the results of the U.S. elections and the potential success of COVID-19 vaccines. The S&P 500 Index returned 10.9% for the month while the MSCI ACWI ex USA was up 13.5% for the month. The portfolio's Domestic Equity composite returned 11.9% (net) while international equity returned 13.4% (net) for the month. The portfolio has no direct emerging markets equity exposure at the moment, pending the outcome of a formal EME search process.
- In fixed income, yields were relatively flat during the month with 10- and 30-year Treasury yields falling one and six basis points, respectively. The Fixed Income Composite returned 1.7% (net) for the month while the BC Agg and BC US HY returned 1.0% and 4.0% respectively
- This brings the overall performance on a trailing one year period return to 10.8% (net), while the allocation and policy index returned 10.9% (net) and 10.6%(net) respectively

20 years Risk/Return is as of 9/30/2020. Chart reflects universe data on quarter end months only.

Returns for 20 years Risk/Return and Statistics Summary are gross of fees.

Since inception return is 8.4% gross of fees. Prior to 1999, performance history does not capture separate net and gross returns.



## MWRA Employees' Retirement System

# TOTAL FUND PERFORMANCE DETAIL (NET)

	Market Value (\$)	% of Portfolio	Policy %	1 Mo (%)	3 Mo (%)	YTD (%)	1 Yr (%)	3 Yrs (%)	5 Yrs (%)	10 Yrs (%)	Inception (%)	Inception Date
<b>Composite</b>	<b>628,051,623</b>	<b>100.0</b>	<b>100.0</b>	<b>6.5</b>	<b>4.6</b>	<b>8.5</b>	<b>10.8</b>	<b>7.3</b>	<b>7.7</b>	<b>7.8</b>	<b>6.9</b>	<b>Jan-86</b>
Allocation Index				6.8	5.1	8.5	10.9	7.3	8.3	7.9	--	Jan-86
Policy Index				6.6	4.1	8.1	10.6	7.6	8.6	8.1	--	Jan-86
<b>Total Balanced</b>	<b>4,134,216</b>	<b>0.7</b>	<b>0.0</b>	<b>0.0</b>	<b>-0.4</b>	<b>-0.1</b>	<b>2.6</b>	<b>1.7</b>	<b>4.4</b>	<b>3.7</b>	<b>3.7</b>	<b>Dec-10</b>
PRIT Core Fund	4,134,216	0.7		0.0	-0.4	1.3	3.3	5.4	7.6	7.9	6.6	Apr-99
60% S&P 500 / 40% BBgBarc Aggregate				7.0	2.6	12.1	14.1	10.5	10.4	10.2	6.5	Apr-99
<b>Total Domestic Equity</b>	<b>193,238,428</b>	<b>30.8</b>	<b>26.0</b>	<b>11.8</b>	<b>6.1</b>	<b>14.7</b>	<b>17.9</b>	<b>13.7</b>	<b>13.1</b>	<b>13.5</b>	<b>7.7</b>	<b>May-99</b>
Russell 3000				12.2	5.7	15.7	19.0	13.2	13.9	14.0	7.2	May-99
<b>Large Cap</b>	<b>150,412,879</b>	<b>23.9</b>	<b>20.0</b>	<b>10.6</b>	<b>3.9</b>	<b>16.4</b>	<b>19.9</b>	<b>15.6</b>	<b>13.9</b>	<b>14.0</b>	<b>14.0</b>	<b>Dec-10</b>
Rhumblin Advisors S&P 500 Index Fund	75,178,556	12.0	8.0	11.0	3.9	14.0	17.4	13.1	13.9	14.1	8.9	Apr-97
S&P 500				10.9	3.9	14.0	17.5	13.2	14.0	14.2	8.9	Apr-97
Coho Relative Value Equity	37,558,829	6.0	6.0	11.4	5.9	7.6	11.1	10.4	--	--	11.9	Mar-16
Russell 1000 Value				13.5	9.2	-1.0	1.7	5.3	8.4	10.9	10.6	Mar-16
Polen Focused Growth	37,675,494	6.0	6.0	8.9	2.0	29.6	33.0	24.8	--	--	21.6	Feb-16
Russell 1000 Growth				10.2	1.5	32.4	36.4	21.5	19.6	17.3	22.1	Feb-16
<b>Small Cap</b>	<b>42,825,548</b>	<b>6.8</b>	<b>6.0</b>	<b>16.3</b>	<b>14.3</b>	<b>9.3</b>	<b>11.8</b>	<b>8.9</b>	<b>11.1</b>	<b>12.3</b>	<b>12.3</b>	<b>Dec-10</b>
Boston Partners Small Cap Value	21,599,858	3.4	3.0	19.6	16.8	-4.3	-2.1	1.2	6.2	9.1	10.0	Feb-97
Russell 2000 Value				19.3	17.8	-3.0	0.3	0.8	6.8	8.7	8.5	Feb-97
Loomis Sayles Small Cap Growth	21,225,690	3.4	3.0	13.0	11.8	23.9	26.6	16.5	15.6	15.3	7.4	Jan-97
Russell 2000 Growth				17.6	16.0	23.1	25.9	12.8	13.2	13.3	7.7	Jan-97
<b>Total Non-US Equity</b>	<b>116,429,271</b>	<b>18.5</b>	<b>21.0</b>	<b>13.3</b>	<b>9.5</b>	<b>8.9</b>	<b>13.7</b>	<b>5.2</b>	<b>8.3</b>	<b>5.3</b>	<b>4.8</b>	<b>Mar-99</b>
<b>International Equity</b>	<b>116,429,271</b>	<b>18.5</b>	<b>15.0</b>	<b>13.3</b>	<b>9.8</b>	<b>10.9</b>	<b>14.9</b>	<b>6.8</b>	<b>8.7</b>	<b>6.2</b>	<b>4.5</b>	<b>Sep-05</b>
SEG Baxter Street	39,371,412	6.3	5.0	11.8	7.4	11.7	14.9	10.2	--	--	12.3	May-16
MSCI ACWI ex USA				13.5	8.3	5.0	9.5	3.8	7.4	5.2	8.0	May-16
Schroder International Alpha Trust Class 1	47,643,021	7.6	5.0	14.3	8.9	17.3	22.5	8.4	9.8	--	7.8	Mar-12
MSCI ACWI ex USA				13.5	8.3	5.0	9.5	3.8	7.4	5.2	5.3	Mar-12
Baillie Gifford International Growth Fund Class K	29,414,838	4.7		13.9	--	--	--	--	--	--	14.5	Oct-20
MSCI ACWI ex USA				13.5	8.3	5.0	9.5	3.8	7.4	5.2	11.0	Oct-20
<b>Emerging Markets Equity</b>	<b>--</b>	<b>--</b>	<b>6.0</b>	<b>--</b>	<b>--</b>	<b>--</b>	<b>--</b>	<b>--</b>	<b>--</b>	<b>--</b>	<b>--</b>	<b>Nov-13</b>
MSCI Emerging Markets				9.2	9.7	10.2	18.4	4.9	10.7	3.6	4.6	Nov-13

Since inception return is 8.4% gross of fees. Prior to 1999, performance history does not capture separate net and gross returns.

In November 2019, Loomis Sayles and Schroders transitioned from a mutual fund to a CIT structure. Performance prior to transitioning to the CIT investment vehicle is linked to mutual fund performance history.



## MWRA Employees' Retirement System

# TOTAL FUND PERFORMANCE DETAIL (NET)

	Market Value (\$)	% of Portfolio	Policy %	1 Mo (%)	3 Mo (%)	YTD (%)	1 Yr (%)	3 Yrs (%)	5 Yrs (%)	10 Yrs (%)	Inception (%)	Inception Date
<b>Total Fixed Income</b>	<b>168,528,862</b>	<b>26.8</b>	<b>27.0</b>	<b>1.7</b>	<b>1.2</b>	<b>9.6</b>	<b>9.8</b>	<b>5.8</b>	<b>5.7</b>	<b>5.3</b>	<b>6.7</b>	<b>Mar-99</b>
Garcia Hamilton Fixed Income Aggregate	49,762,888	7.9	8.0	0.8	0.3	7.6	7.3	--	--	--	6.0	Apr-18
<i>BBgBarc US Aggregate TR</i>				1.0	0.5	7.4	7.3	5.5	4.3	3.7	6.6	Apr-18
Lord Abbett Core Fixed Income	26,528,736	4.2	4.0	1.2	0.8	8.0	7.8	--	--	--	6.6	Apr-18
<i>BBgBarc US Aggregate TR</i>				1.0	0.5	7.4	7.3	5.5	4.3	3.7	6.6	Apr-18
Rhumblin TIPS	31,479,483	5.0	5.0	1.1	0.1	9.5	9.9	5.8	--	--	4.3	Jun-16
<i>BBgBarc US TIPS TR</i>				1.1	0.1	9.7	10.1	5.8	4.7	3.5	4.5	Jun-16
Loomis Sayles Multisector Full Discretion Trust	49,178,794	7.8	8.0	3.1	2.6	13.1	13.7	7.1	7.4	6.5	8.0	Mar-99
<i>BBgBarc US Aggregate TR</i>				1.0	0.5	7.4	7.3	5.5	4.3	3.7	5.0	Mar-99
<i>BBgBarc US High Yield TR</i>				4.0	3.4	5.1	7.2	5.7	7.6	6.8	6.9	Mar-99
Octagon Senior Secured Credit Cayman Fund Ltd. - Class L Acc, Series 1	11,523,680	1.8	2.0	2.3	2.4	2.5	3.9	--	--	--	3.4	Aug-19
<i>Credit Suisse Leveraged Loan</i>				2.1	3.0	1.5	3.1	3.7	4.7	4.5	2.5	Aug-19
Invesco Mortgage Recovery Loans Feeder Fund	55,282	0.0		0.0	0.1	-0.4	-4.8	6.5	0.4	7.0	12.1	Apr-10
<i>BBgBarc US Aggregate TR</i>				1.0	0.5	7.4	7.3	5.5	4.3	3.7	4.0	Apr-10
<b>Total Hedge Fund</b>	<b>36,598,198</b>	<b>5.8</b>	<b>6.0</b>	<b>1.5</b>	<b>2.2</b>	<b>3.1</b>	<b>4.4</b>	<b>3.1</b>	<b>3.0</b>	<b>3.4</b>	<b>3.2</b>	<b>Oct-06</b>
PRIM Portfolio Completion Strategies	13,301,393	2.1		0.0	0.7	-3.9	-2.8	1.1	2.7	3.6	3.3	Oct-06
Corbin Pinehurst Partners	11,362,475	1.8		3.7	4.0	8.5	10.4	--	--	--	7.2	Nov-18
<i>HFRI Fund of Funds Composite Index</i>				3.4	3.6	6.4	8.2	3.8	3.6	3.1	6.0	Nov-18
UBS Neutral Alpha Strategies	11,199,321	1.8		1.2	2.5	7.9	9.1	--	--	--	6.1	Nov-18
<i>HFRI Fund of Funds Composite Index</i>				3.4	3.6	6.4	8.2	3.8	3.6	3.1	6.0	Nov-18
Entrust Peru Wind Down	735,008	0.1		-0.1	-0.5	-2.9	-5.7	-5.0	--	--	-5.0	Dec-17
<i>HFRI Fund of Funds Composite Index</i>				3.4	3.6	6.4	8.2	3.8	3.6	3.1	3.8	Dec-17
<b>Other</b>	<b>6,785,968</b>	<b>1.1</b>	<b>0.0</b>	<b>0.0</b>	<b>0.0</b>	<b>0.6</b>	<b>1.2</b>	<b>1.8</b>	<b>1.3</b>	<b>0.7</b>	<b>0.7</b>	<b>Dec-10</b>
Cash Account	6,785,968	1.1		0.0	0.0	0.6	1.2	1.8	1.3	0.7	1.8	Feb-00
<i>91 Day T-Bills</i>				0.0	0.0	0.4	0.6	1.5	1.1	0.6	1.6	Feb-00

Importantly, all returns in this report, including those of the private real estate managers, are based on a time weighted return calculation and not based on IRRs, which can result in return differences.

Corbin Pinehursts Partners and UBS Neutral Alpha Strategies are preliminary as of 9/30/2020 and subject to change when finalized.



## MWRA Employees' Retirement System

# TOTAL FUND PERFORMANCE DETAIL (NET)

	Market Value (\$)	% of Portfolio	Policy %	1 Mo (%)	3 Mo (%)	YTD (%)	1 Yr (%)	3 Yrs (%)	5 Yrs (%)	10 Yrs (%)	Inception (%)	Inception Date
<b>Total Real Estate</b>	<b>49,566,721</b>	<b>7.9</b>	<b>10.0</b>	<b>0.0</b>	<b>0.9</b>	<b>0.4</b>	<b>2.6</b>	<b>6.3</b>	<b>7.4</b>	<b>10.2</b>	<b>7.6</b>	<b>Apr-99</b>
<i>NCREIF Property Index</i>				0.0	0.7	0.5	2.0	5.1	6.3	9.4	8.5	Apr-99
Morgan Stanley Prime Property (\$2.8m commitment in '95)	19,856,116	3.2		0.0	1.1	-0.2	1.3	5.3	6.9	11.0	8.4	Sep-95
TA Realty Core Property Fund, LP (\$15m commitment in '19)	19,879,695	3.2		0.0	0.8	1.9	3.7	--	--	--	4.3	Jun-19
Invesco Mortgage Recovery II (\$3M commitment in '15)	1,012,508	0.2		0.0	0.0	0.7	-2.3	11.9	11.3	--	11.0	Oct-15
Landmark VI (\$2m commitment in '11)	93,759	0.0		0.0	-4.1	-9.0	-18.2	-10.9	-6.4	--	3.8	Jul-11
Landmark VIII (\$4m commitment in '17)	1,190,192	0.2		0.0	2.8	-4.7	0.4	13.9	--	--	13.5	Nov-17
Courtland/Mesirow MFire (\$2m commitment in '11)	624,767	0.1		0.0	0.0	-7.4	-12.0	-2.2	2.5	--	2.3	May-12
Cerberus (\$1.5m commitment in '12)	604,290	0.1		0.0	-4.0	-3.2	1.3	6.4	5.5	--	10.7	May-13
TA Realty Fund X LP (\$3.5m commitment in '12)	367,725	0.1		0.0	-2.2	-8.6	-6.8	7.9	8.0	--	8.9	May-13
TerraCap Partners III, LP (\$2.6m commitment in '15)	1,729,862	0.3		0.0	0.7	1.8	2.3	6.4	10.7	--	10.6	Jul-15
TerraCap Partners IV, LP (\$4m commitment in '17)	4,207,808	0.7		0.0	1.7	0.9	10.3	9.4	--	--	9.1	Nov-17
<b>Total Private Equity</b>	<b>52,769,959</b>	<b>8.4</b>	<b>10.0</b>	<b>0.0</b>	<b>5.1</b>	<b>1.0</b>	<b>1.6</b>	<b>8.1</b>	<b>4.4</b>	<b>11.9</b>	<b>8.9</b>	<b>Apr-99</b>
<i>CJA US All PE</i>				0.0	0.0	-1.6	2.1	9.2	10.6	12.4	11.8	Apr-99
<i>NASDAQ W/O Income</i>				11.8	3.6	36.0	40.8	21.1	19.0	17.2	7.7	Apr-99
PRIM Vintage Year 2008 (\$3m commitment in '08)	954,080	0.2		0.0	13.7	-5.1	-4.3	8.4	13.7	17.0	7.6	Jun-08
PRIM Vintage Year 2009 (\$1m commitment in '09)	195,911	0.0		0.0	56.0	40.2	48.0	32.0	25.5	21.8	11.2	Nov-09
PRIM Vintage Year 2010 (\$1m commitment in '10)	508,238	0.1		0.0	26.2	27.7	22.3	17.5	16.8	12.5	9.2	Jun-10
PRIM Vintage Year 2011 (\$1.5m commitment in '11)	924,301	0.1		0.0	6.5	3.5	3.3	13.0	16.6	--	3.4	May-11
PRIM Vintage Year 2012 (\$1m commitment in '12)	735,344	0.1		0.0	22.4	28.9	30.4	18.6	18.8	--	-13.0	Jun-12
PRIM Vintage Year 2014 (\$2m commitment in '14)	1,906,151	0.3		0.0	19.3	14.7	19.8	23.1	19.5	--	3.0	Jun-14
PRIM Vintage Year 2017 (\$2m commitment in '17)	1,198,529	0.2		0.0	13.8	5.2	10.7	10.4	--	--	7.1	May-17
PRIM Vintage Year 2020 (\$5m commitment in '20)	217,508	0.0		0.0	7.7	--	--	--	--	--	0.7	Mar-20
Alcentra European DLF (\$5m commitment in '14)	1,108,983	0.2		0.0	0.8	-4.8	-3.4	-0.2	2.5	--	4.0	Jan-15
Ascent Fund IV (\$2m commitment in '04)	31,080	0.0		0.0	-0.3	-1.1	-2.0	-54.1	-47.5	-32.6	-21.4	Jul-04
Ascent Fund IV-B (\$1m commitment in '16)	149,795	0.0		0.0	-2.1	-28.9	-36.3	-21.8	--	--	-13.8	Jul-16
Ascent Fund V (\$2m commitment in '08)	1,624,903	0.3		0.0	2.1	-10.5	-11.0	-5.5	0.6	6.0	4.1	Oct-08
Ascent VI (\$3m commitment in '15)	2,846,317	0.5		0.0	1.7	-7.3	-7.4	1.4	0.3	--	0.3	Dec-15
CVI Credit Value Fund IV A LP (\$6m commitment in '17)	5,718,477	0.9		0.0	0.0	-9.6	-7.9	0.8	--	--	0.8	Dec-17

Importantly, all returns in this report, including those of the private markets managers, are based on a time weighted return calculation and not based on IRRs, which can result in return differences.

Market values for Morgan Stanley Prime Property, TA Realty Core Property Fund, and PRIM are stated as of 9/30/2020. All other Real Estate and Private Equity managers are as of 6/30/2020 and are adjusted for cash flows.



## MWRA Employees' Retirement System

# TOTAL FUND PERFORMANCE DETAIL (NET)

	Market Value (\$)	% of Portfolio	Policy %	1 Mo (%)	3 Mo (%)	YTD (%)	1 Yr (%)	3 Yrs (%)	5 Yrs (%)	10 Yrs (%)	Inception (%)	Inception Date
Invesco Fund IV (\$3m commitment in '03)	13,273	0.0		0.0	0.0	-5.6	-30.0	-16.1	-7.9	3.7	--	Feb-04
Invesco Fund VI (\$5m commitment in '13)	6,308,126	1.0		0.0	0.0	7.0	7.9	10.7	10.3	--	12.6	Jul-13
Kayne Energy Fund VII (\$5m commitment in '15)	1,300,446	0.2		0.0	5.9	-66.8	-71.6	-36.3	--	--	-17.4	Jan-16
Foundry 2007 (\$3m commitment in '07)	206,805	0.0		0.0	3.8	-11.4	-34.1	-19.2	-26.3	5.3	15.0	Dec-07
Foundry 2010 (\$3m commitment in '10)	4,088,571	0.7		0.0	28.5	25.9	19.9	18.0	7.7	--	10.1	Jan-11
Foundry 2010 Annex (\$0.4m commitment in '15)	390,580	0.1		0.0	96.4	100.9	76.4	51.7	30.4	--	28.7	Sep-15
Pinebridge PEP V (\$6m commitment in '07)	710,372	0.1		0.0	0.0	7.7	6.8	0.4	0.8	7.8	--	Mar-08
Landmark XV (\$3m commitment in '13)	1,191,683	0.2		0.0	6.6	-10.4	-7.9	5.5	6.3	--	10.3	Nov-13
JFL Equity Investors IV, L.P. (\$6m commitment in '16)	6,751,674	1.1		0.0	2.7	9.7	25.2	42.6	--	--	33.0	Jan-17
Private Advisors Small Co. Coinvestment Fund, LP (\$4m commitment in '17)	4,058,683	0.6		0.0	0.0	17.1	19.9	18.9	--	--	16.4	Feb-17
Park Square Credit Opportunities III (\$3m commitment in '17)	2,634,590	0.4		0.0	2.1	5.7	8.4	--	--	--	6.3	Feb-18
Ironsides Constitution Opportunities (\$3m commitment in '18)	2,356,903	0.4		0.0	2.2	5.0	7.1	--	--	--	8.1	Sep-18
HarbourVest Dover Street X (\$9m commitment in '20)	1,413,181	0.2		0.0	0.0	--	--	--	--	--	70.0	Jun-20
Hamilton Lane Secondary Fund V LP (\$9m commitment in '20)	1,590,777	0.3		0.0	10.8	--	--	--	--	--	10.8	Jul-20
JFL Equity Investors V, L.P. (\$8m commitment in '20)	1,634,679	0.3		0.0	-7.9	--	--	--	--	--	-7.9	Sep-20
<i>Private Equity Benchmark (1 Qtr. Lag)</i>				<i>0.0</i>	<i>9.4</i>	<i>2.1</i>	<i>3.4</i>	<i>10.6</i>	<i>10.3</i>	<i>12.5</i>	<i>9.4</i>	<i>Sep-20</i>

Importantly, all returns in this report, including those of the private markets managers, are based on a time weighted return calculation and not based on IRRs, which can result in return differences.

Pinebridge PEP V is valued as of 3/31/2020 and adjusted for cash flows. All other Private Equity managers are valued as of 6/30/2020 and are adjusted for cash flows.



## MWRA Employees' Retirement System

# NOTES

- 1 - Results for periods longer than one year are annualized.
- 2 - Total Balances, Large Cap, Small Cap, and Other Composite performance starts 12/1/2010.
- 3 - Preliminary Total Composite net of fee since inception return is 6.8% for the current month.
- 4 - Preliminary Total Composite gross of fee since inception return is 8.4% for the current month.
- 5 - Targets, Allocation Index, and Policy Index have been updated to reflect new allocation of 06/01/2020.
- 6 - Policy Index changed from Nasdaq to Cambridge All PE to reflect as of 5/1/2012.
- 7 - Policy Index Consists of: 20% S&P 500, 6% Russell 2000, 10% MSCI EAFE, 5% MSCI ACWI IMI , 6% MSCI Emerging Markets, 12% BBgBarc US Aggregate TR, 5% BBgBarc US TIPS TR, 8% BBgBarc US Universal TR, 10% NCREIF Property Index, 10% C|A US All PE , 6% HFRI Fund of Funds Composite Index, 2% Credit Suisse Leveraged Loan.
- 8 - Allocation index consists of: Weighted index of underlying managers to their respective benchmark.





## MWRA Employees' Retirement System

# ESTIMATED FEE SCHEDULE

Account	Fee Schedule	Market Value As of 11/30/2020	% of Portfolio	Estimated Annual Fee (\$)	Estimated Annual Fee (%)
PRIT Core Fund	0.49% of Assets	\$4,134,216	0.7%	\$20,258	0.49%
Rhumblin Advisors S&P 500 Index Fund	0.05% of Assets	\$75,178,556	12.0%	\$37,589	0.05%
Coho Relative Value Equity	0.50% of First 75.0 Mil, 0.40% of Next 75.0 Mil, 0.35% Thereafter	\$37,558,829	6.0%	\$187,794	0.50%
Polen Focused Growth	0.65% of Assets	\$37,675,494	6.0%	\$244,891	0.65%
Boston Partners Small Cap Value	1.00% of Assets	\$21,599,858	3.4%	\$215,999	1.00%
Loomis Sayles Small Cap Growth	0.45% of Assets	\$21,225,690	3.4%	\$95,516	0.45%
SEG Baxter Street	1.00% of Assets	\$39,371,412	6.3%	\$393,714	1.00%
Schroder International Alpha Trust Class 1	0.55% of Assets	\$47,643,021	7.6%	\$262,037	0.55%
Baillie Gifford International Growth Fund Class K	0.60% of Assets	\$29,414,838	4.7%	\$176,489	0.60%
Garcia Hamilton Fixed Income Aggregate	0.25% of First 25.0 Mil, 0.20% Thereafter	\$49,762,888	7.9%	\$112,026	0.23%
Lord Abbett Core Fixed Income	0.19% of Assets	\$26,528,736	4.2%	\$50,405	0.19%
Rhumblin TIPS	0.05% of First 50.0 Mil, 0.04% Thereafter	\$31,479,483	5.0%	\$15,740	0.05%
Loomis Sayles Multisector Full Discretion Trust	0.50% of First 20.0 Mil, 0.40% of Next 20.0 Mil, 0.30% Thereafter	\$49,178,794	7.8%	\$207,536	0.42%
Octagon Senior Secured Credit Cayman Fund Ltd. - Class L Acc, Series 1	0.40% of Assets	\$11,523,680	1.8%	\$46,095	0.40%
Invesco Mortgage Recovery Loans Feeder Fund	No Fee	\$55,282	0.0%	--	--
PRIM Portfolio Completion Strategies	No Fee	\$13,301,393	2.1%	--	--
Corbin Pinehurst Partners	0.85% of Assets	\$11,362,475	1.8%	\$96,581	0.85%
UBS Neutral Alpha Strategies	0.90% of Assets	\$11,199,321	1.8%	\$100,794	0.90%
Entrust Peru Wind Down	0.50% of Assets	\$735,008	0.1%	\$3,675	0.50%
Cash Account	No Fee	\$6,785,968	1.1%	--	--
Morgan Stanley Prime Property (\$2.8m commitment in '95)	No Fee	\$19,856,116	3.2%	--	--
TA Realty Core Property Fund, LP (\$15m commitment in '19)	No Fee	\$19,879,695	3.2%	--	--
Invesco Mortgage Recovery II (\$3M commitment in '15)	No Fee	\$1,012,508	0.2%	--	--
Landmark VI (\$2m commitment in '11)	No Fee	\$93,759	0.0%	--	--



## MWRA Employees' Retirement System

# ESTIMATED FEE SCHEDULE

Account	Fee Schedule	Market Value As of 11/30/2020	% of Portfolio	Estimated Annual Fee (\$)	Estimated Annual Fee (%)
Landmark VIII (\$4m commitment in '17)	No Fee	\$1,190,192	0.2%	--	--
Courtland/Mesirow MFire (\$2m commitment in '11)	No Fee	\$624,767	0.1%	--	--
Cerberus (\$1.5m commitment in '12)	No Fee	\$604,290	0.1%	--	--
TA Realty Fund X LP (\$3.5m commitment in '12)	No Fee	\$367,725	0.1%	--	--
TerraCap Partners III, LP (\$2.6m commitment in '15)	No Fee	\$1,729,862	0.3%	--	--
TerraCap Partners IV, LP (\$4m commitment in '17)	No Fee	\$4,207,808	0.7%	--	--
PRIM Vintage Year 2008 (\$3m commitment in '08)	No Fee	\$954,080	0.2%	--	--
PRIM Vintage Year 2009 (\$1m commitment in '09)	No Fee	\$195,911	0.0%	--	--
PRIM Vintage Year 2010 (\$1m commitment in '10)	No Fee	\$508,238	0.1%	--	--
PRIM Vintage Year 2011 (\$1.5m commitment in '11)	No Fee	\$924,301	0.1%	--	--
PRIM Vintage Year 2012 (\$1m commitment in '12)	No Fee	\$735,344	0.1%	--	--
PRIM Vintage Year 2014 (\$2m commitment in '14)	No Fee	\$1,906,151	0.3%	--	--
PRIM Vintage Year 2017 (\$2m commitment in '17)	No Fee	\$1,198,529	0.2%	--	--
PRIM Vintage Year 2020 (\$5m commitment in '20)	No Fee	\$217,508	0.0%	--	--
Alcentra European DLF (\$5m commitment in '14)	No Fee	\$1,108,983	0.2%	--	--
Ascent Fund IV (\$2m commitment in '04)	No Fee	\$31,080	0.0%	--	--
Ascent Fund IV-B (\$1m commitment in '16)	No Fee	\$149,795	0.0%	--	--
Ascent Fund V (\$2m commitment in '08)	No Fee	\$1,624,903	0.3%	--	--
Ascent VI (\$3m commitment in '15)	No Fee	\$2,846,317	0.5%	--	--
CVI Credit Value Fund IV A LP (\$6m commitment in '17)	No Fee	\$5,718,477	0.9%	--	--
Invesco Partnership Fund IV (\$3m commitment in '03)	No Fee	\$13,273	0.0%	--	--
Invesco Fund VI (\$5m commitment in '13)	No Fee	\$6,308,126	1.0%	--	--
Kayne Energy Fund VII (\$5m commitment in '15)	No Fee	\$1,300,446	0.2%	--	--
Foundry 2007 (\$3m commitment in '07)	No Fee	\$206,805	0.0%	--	--
Foundry 2010 (\$3m commitment in '10)	No Fee	\$4,088,571	0.7%	--	--
Foundry 2010 Annex (\$0.4m commitment in '15)	No Fee	\$390,580	0.1%	--	--
Pinebridge (AIG) PEP V Asia (\$6m commitment in '07)	No Fee	\$58,955	0.0%	--	--
Pinebridge (AIG) PEP V Co-Investment (\$6m commitment in '07)	No Fee	\$61,317	0.0%	--	--
Pinebridge (AIG) PEP V Europe (\$6m commitment in '07)	No Fee	\$27,360	0.0%	--	--



## MWRA Employees' Retirement System

# ESTIMATED FEE SCHEDULE

Account	Fee Schedule	Market Value As of 11/30/2020	% of Portfolio	Estimated Annual Fee (\$)	Estimated Annual Fee (%)
Pinebridge (AIG) PEP V Large Market US Buyout (\$6m commitment in '07)	No Fee	\$113,012	0.0%	--	--
Pinebridge (AIG) PEP V Preferred Participation Fund (\$6m commitment in '07)	No Fee	\$228,331	0.0%	--	--
Pinebridge (AIG) PEP V Secondary (\$6m commitment in '07)	No Fee	\$34,466	0.0%	--	--
Pinebridge (AIG) PEP V Small-Mid Market US Buyout (\$6m commitment in '07)	No Fee	\$90,939	0.0%	--	--
Pinebridge (AIG) PEP V US Venture (\$6m commitment in '07)	No Fee	\$95,992	0.0%	--	--
Landmark XV (\$3m commitment in '13)	No Fee	\$1,191,683	0.2%	--	--
JFL Equity Investors IV, L.P. (\$6m commitment in '16)	No Fee	\$6,751,674	1.1%	--	--
Private Advisors Small Co. Coinvestment Fund, LP (\$4m commitment in '17)	No Fee	\$4,058,683	0.6%	--	--
Park Square Credit Opportunities III (\$3m commitment in '17)	No Fee	\$2,634,590	0.4%	--	--
Ironsides Constitution Opportunities (\$3m commitment in '18)	No Fee	\$2,356,903	0.4%	--	--
HarbourVest Dover Street X (\$9m commitment in '20)	No Fee	\$1,413,181	0.2%	--	--
Hamilton Lane Secondary Fund V LP (\$9m commitment in '20)	No Fee	\$1,590,777	0.3%	--	--
JFL Equity Investors V, L.P. (\$8m commitment in '20)	No Fee	\$1,634,679	0.3%	--	--
<b>Investment Management Fee</b>		<b>\$628,051,623</b>	<b>100.0%</b>	<b>\$2,267,137</b>	<b>0.36%</b>

**Note:**

Estimate fee for privates are ~\$997,801 annually, which brings the total expense ratio for privates to ~16 bps. This brings the total estimated expense ratio for MWRA to ~52 bps.



## **Information Disclaimer**

- Past performance is no guarantee of future results.
- All investments carry some level of risk. Diversification and other asset allocation techniques are not guaranteed to ensure profit or protect against losses.
- NEPC's source for portfolio pricing, calculation of accruals, and transaction information is the plan's custodian bank. Information on market indices and security characteristics is received from other sources external to NEPC. While NEPC has exercised reasonable professional care in preparing this report, we cannot guarantee the accuracy of all source information contained within.
- Some index returns displayed in this report or used in calculation of a policy, allocation or custom benchmark may be preliminary and subject to change.
- This report is provided as a management aid for the client's internal use only. Information contained in this report does not constitute a recommendation by NEPC.
- This report may contain confidential or proprietary information and may not be copied or redistributed to any party not legally entitled to receive it.

## **Reporting Methodology**

- The client's custodian bank is NEPC's preferred data source unless otherwise directed. NEPC generally reconciles custodian data to manager data. If the custodian cannot provide accurate data, manager data may be used.
- Trailing time period returns are determined by geometrically linking the holding period returns, from the first full month after inception to the report date. Rates of return are annualized when the time period is longer than a year. Performance is presented gross and/or net of manager fees as indicated on each page.
- For managers funded in the middle of a month, the "since inception" return will start with the first full month, although actual inception dates and cash flows are taken into account in all Composite calculations.
- This report may contain forward-looking statements that are based on NEPC's estimates, opinions and beliefs, but NEPC cannot guarantee that any plan will achieve its targeted return or meet other goals.

